

## GEZE TS 4000

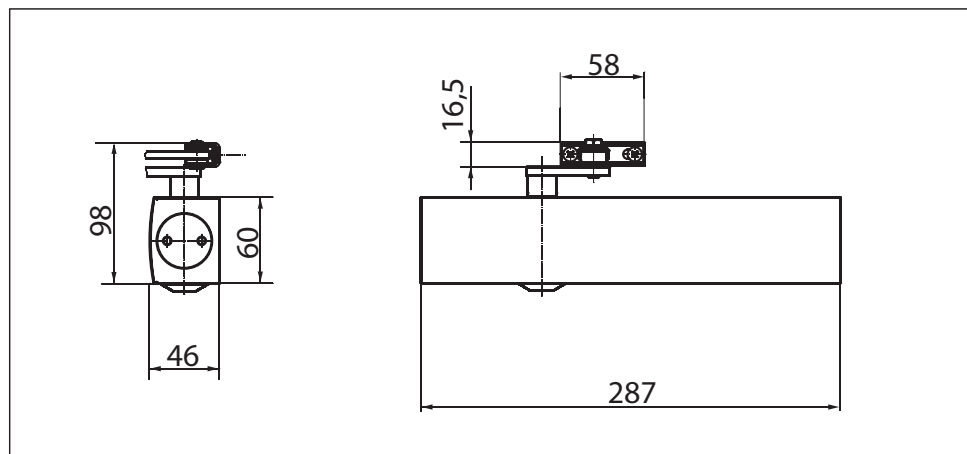
### Link arm door closer for single-leaf doors with a leaf width of up to 1400 mm

TS 4000 overhead door closer is approved for use with left and right single-action doors with leaf widths of up to 1400 mm (without any need for conversion) and for mounting on smoke and fire doors. The closing force to EN 1154 size 1-6 is infinitely variable from the front and is easy to monitor thanks to the optical size indicator. The back check and thermo-constant closing speed are also adjustable from the front; the latching action is adjusted by means of the link arm. The closer features a safety valve for both the open and close directions.

#### Special versions:

- GEZE TS 4000 with hold-open linkage  
Hold-open angle of up to 150° (must not be used on smoke and fire doors)
- GEZE TS 4000 S  
With delayed closing action of up to 30 seconds, adjustable from the front (delayed closing action not effective with transom mounting on opposite hinge side).
- GEZE TS 4000 door closer, wet room version  
Same as TS 4000, but with specially nickel-plated spindle, bearing shells and stainless steel screw accessories for aggressive environments.

### GEZE TS 4000



### Application range

- For single-action doors, leaf width of up to 1400 mm
- Compatible with left-hand and right-hand doors without the need for conversion
- For fireproof doors (door closers with mounting plate)
- Standard mounting on door leaf, hinge side; transom mounting on opposite hinge side also possible
- Can be installed on door leaf on opposite hinge side with parallel arm mounting

## Closer specifications

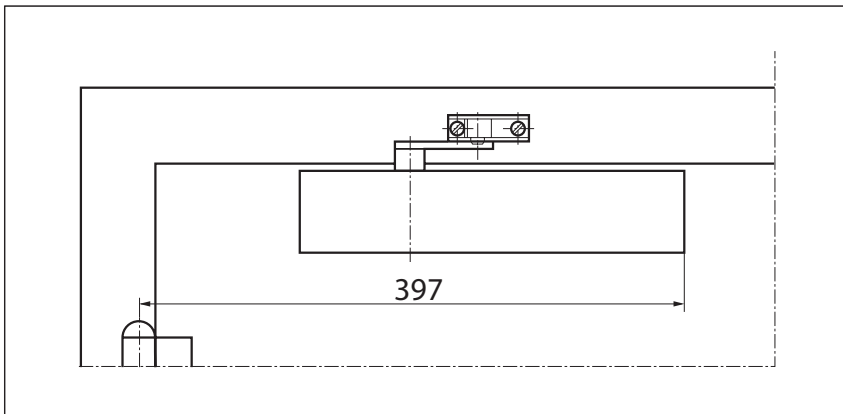
Product features	GEZE TS 4000 closer	GEZE TS 4000 S closer
Closing force to EN1154	1 - 6	
Leaf width recommended up to	1400 mm	
Identical version DIN-L and DIN-R	●	●
Product tested in acc. with	Door closer tested in acc. with EN1154	
Suitable for fireproof doors	●	●
Mounting plate with hole pattern acc. to EN1154 Supplement	●	●
Length	287 mm	
Installation depth	46 mm	
Height	60 mm	
Functions		
Adjustable closing force	● Infinitely variable	
Adjustable closing speed	●	●
Adjustable latching action	● Via link arm	● Via valve
Integrated back check	● Hydraulically adjustable	
Integrated delayed closing action		●
Closing force adjustment position	Front	
Optical closing force display	●	●
Safety valve featuring protection against vandalism	●	●
Thermo-constant valves	●	●

● = yes

○ = no

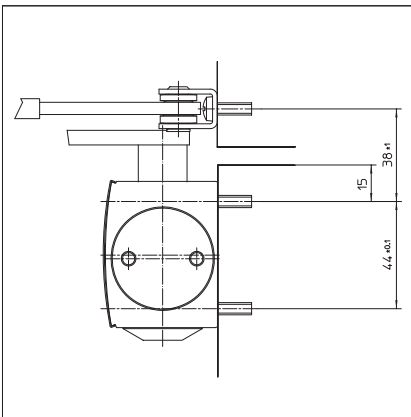
## Door leaf mounting/hinge side TS 4000

## View

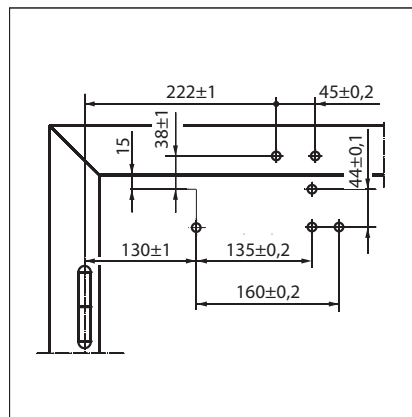


Mounting example for GEZE TS 4000 1-6, TS 4000 S, TS 4000 wet room

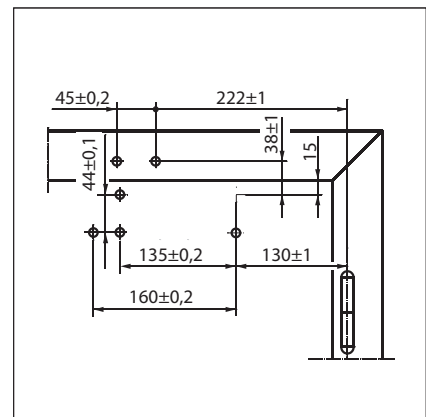
## Direct mounting



Cross section = direct mounting

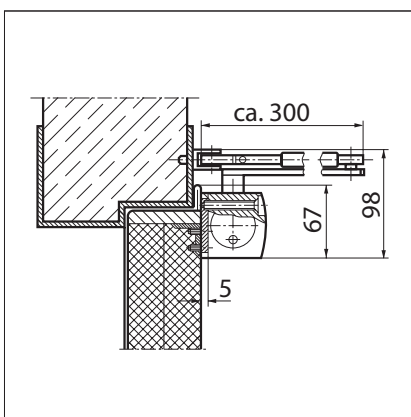


Fitting dimensions for left-hand door

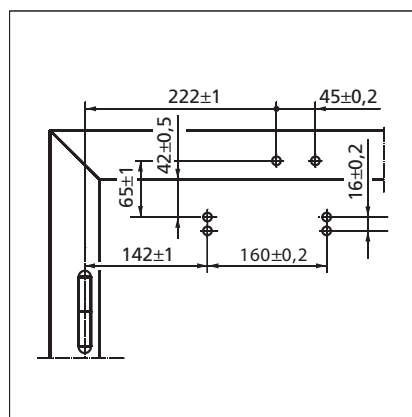


Fitting dimensions for right-hand door

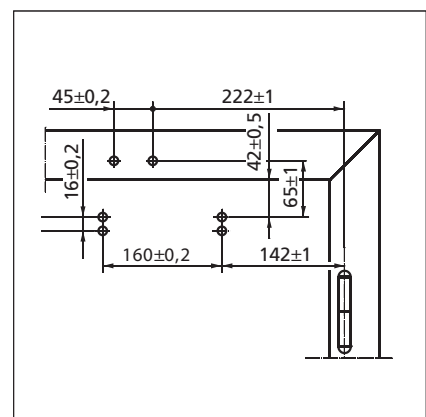
## Mounting with mounting plate



Cross section = mounting with mounting plate



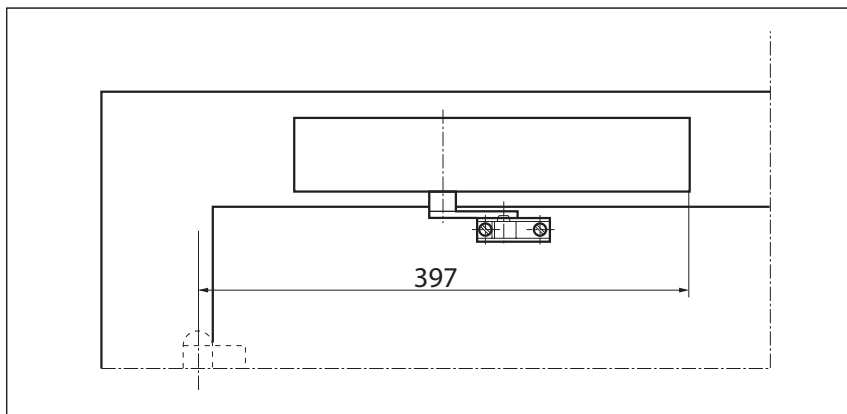
Fitting dimensions for left-hand door



Fitting dimensions for right-hand door

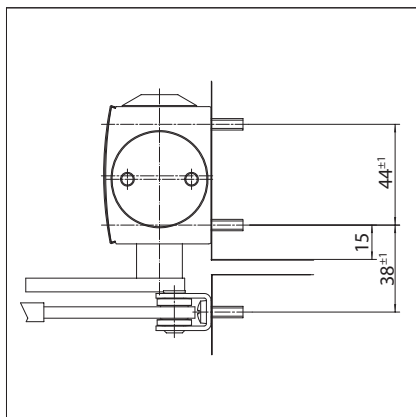
## Transom mounting/opposite hinge side TS 4000

## View

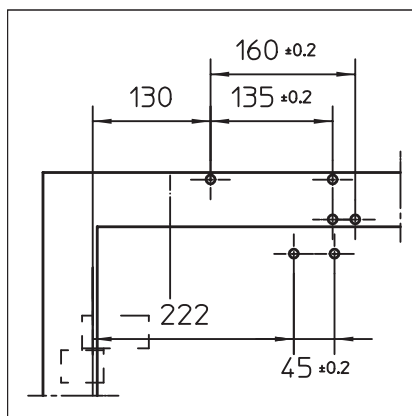


Mounting example for GEZE TS 4000 1-6, TS 4000 S, TS 4000 wet room

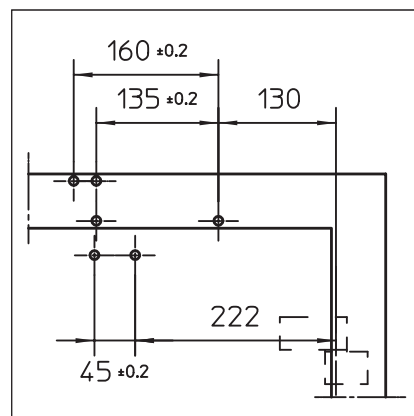
## Direct mounting



Cross section = direct mounting

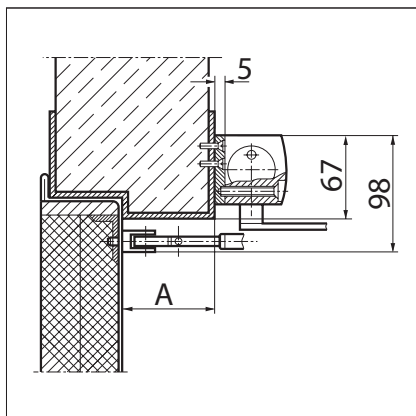
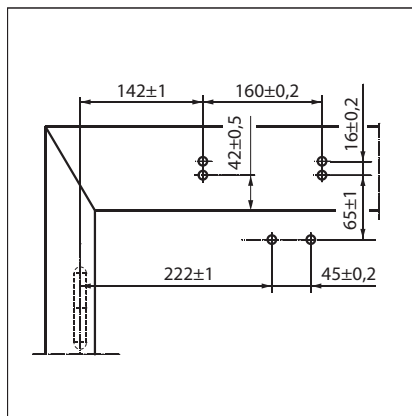


Fitting dimensions for right-hand door

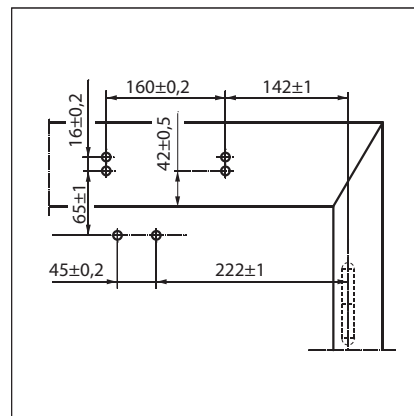


Fitting dimensions for left-hand door

## Mounting with mounting plate

Cross section = mounting with mounting plate  
A = max. 70 mm lintel depth with smoke and fire doors

Fitting dimensions for right-hand door



Fitting dimensions for left-hand door