

500 Series TECHNICAL DATA

International Patent Application No. PCT/GB2006/002848

The 500 Series Panic & Emergency Exit Hardware range is non-handed and Certified to EN1125 & EN179. The range has been certified for doors up to 2500mm high and 1300mm wide and is available with Traditional Style Bolts and Pullman Catches.

Maintenance

It is important that all a panic and emergency exit hardware devices are inspected and maintained properly to ensure safety is maintained when exiting a building in any situation.

Once the device is fitted regular maintenance is recommended.

Weekly:

- Make sure the Exit Device functions correctly.
- Any fixings that have worked loose should be re-secured
- Any damaged components should be replaced.
- Ensure there are no obstructions which prevent the panic unit from functioning correctly.

Every three months:

- Check for wear, any visible worn components should be replaced.

Fixing / Installation

Installation instructions are supplied with all the Exidor Panic and Emergency Exit Hardware. Provided the instructions are followed and the units are fitted by a competent person the Exidor range will offer a high degree of safety and security. No responsibility can be accepted by the manufacturer if the installation instructions are not followed.

In order to meet the CEN European Standards the door and frame should be of good quality and suitable to support the hardware.

Make sure that any weather strips or fixings on the door or frame do not interfere with the opening and closing of the door.

All bars and shoots are cut to the exact size on site.

Construction

The main body, slave unit and a number of internal components are manufactured from Zinc Diecasting, Steel is used for the Shoot Ends and Shoot Bolts, whilst the Guides are made from Aluminium. The Pullman Catches are Stainless Steel with a Diecast Aluminium Cover.

Passivate Protection

The passivate process gives extra protection to the steel components and is recommended when the product is to be used in harsh conditions, such as outside gates, around swimming pools or coastal areas

Chromating

Chromating offers increased protection to the aluminium components, in harsh condition such as coastal areas or swimming pools.

Standard Sizes

Standard sized units are suitable for doors up to 2440mm high and 1220mm wide. The shoot bolts and cross bars can be cut down on site to suit the door height and width.

Non-Standard Shoot Bolt Lengths

For larger doors above 2440mm height special size Top Shoot Bolt lengths are available up on request. The following lengths are stocked by Fred Duncombe Ltd.

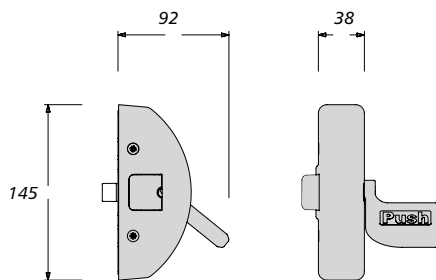
- 1210mm for doors up to 2400mm high (Standard size supplied)
- 1600mm for doors up to 2680mm high
- 2100mm for doors up to 3180mm high

Threshold Seal

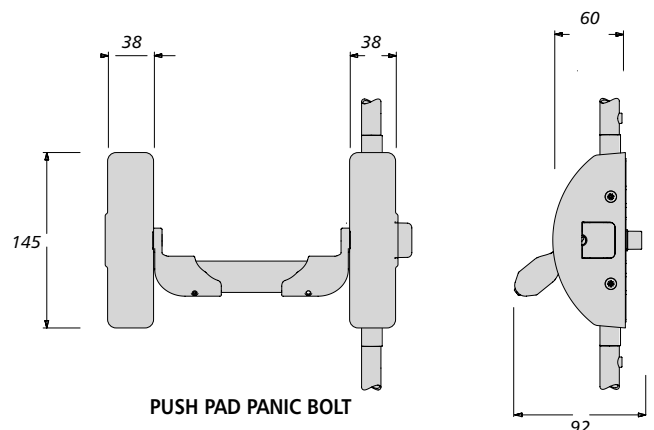
The ES1 threshold seal plate is for outward opening broad butt hinged doors. The seal has been fully tested with the Exidor range of Vertical Bolts and Pullman Catches so that the CE mark and European CEN Standards EN179 and EN1125 are not compromised. The seal meets the requirements of the Disability Discrimination Act 2004 and has been Fire, Smoke and Acoustic tested.

Mechanical Code Lock

The Exidor Push Button Mechanical Code Lock allows access from the outside of a door without compromising the safety on the inside. For use with the Exidor 500 range including Bolts, Latches and Pullmans.



PUSH PAD PANIC LATCH



PUSH PAD PANIC BOLT

500 Series TECHNICAL DATA

Technical Parts List - 500 series

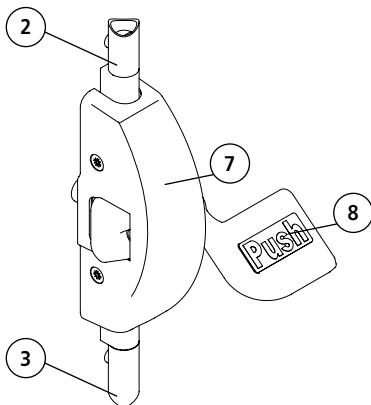
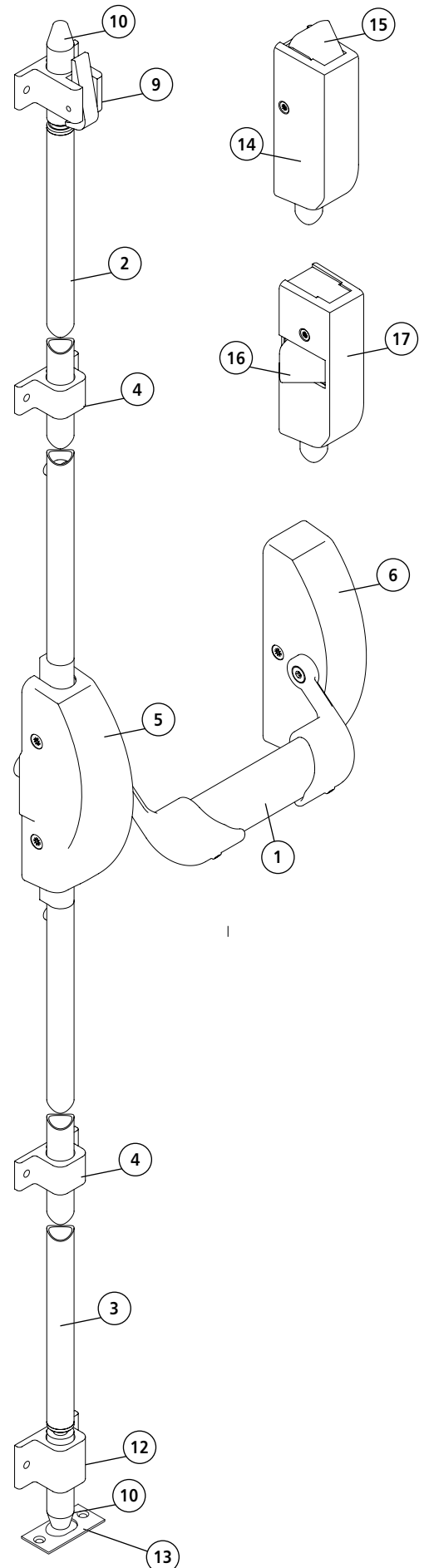
1. Oval Push Bar
2. Top Shoot Tube
3. Bottom Shoot Tube
4. Guide
5. Push Bar Panic Bolt Assembly
6. Slave Unit
7. Push Pad Panic Bolt Assembly
8. Push Pad Label
9. Top Trip Assembly
10. Top Shoot End Stud
11. Bottom Shoot End Plug
12. Bottom Guide
13. Bottom Socket Plate
14. Vertical Pullman Cover
15. Vertical Pullman Assembly
16. Horizontal Pullman Assembly
17. Horizontal Pullman Cover



CROSS BAR UNITS
 EN1125 : 1997 + A1 : 2001
 Classification No.
 3 7 6 0 1 3 2 2 A

PUSH PAD UNITS
 EN179 : 1997 + A1 : 2001
 Classification No.
 3 7 6 0 1 3 2 2 B

PARTS FOR PUSH BAR PANIC BOLT



PARTS FOR PUSH PAD PANIC BOLT

International Patent Application No. PCT/GB2006/002848